

**Session Name:** lect1-13-01-2020 13-52

**Date Created:** 13/01/2020 13:00:13

**Active Participants:** 139 of 139

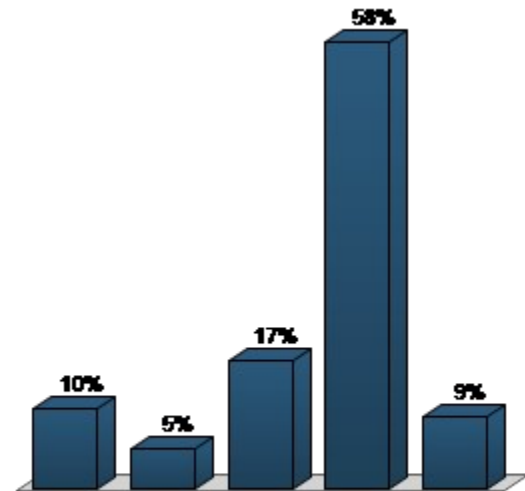
**Average Score:** 0.00%

**Questions:** 6

## Results by Question

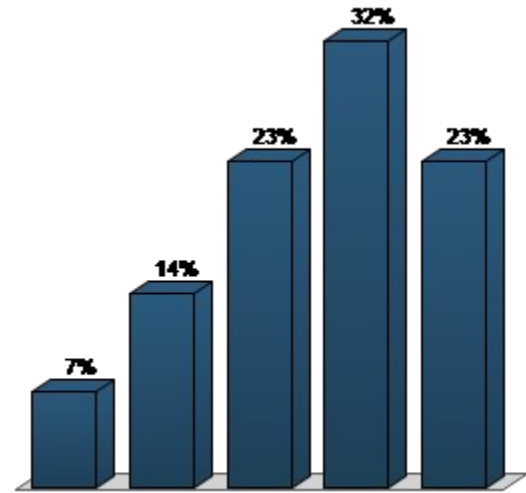
**1. TurningPoint: Chose guest. Enter the session id. Then just hit submit – sign in is not needed**  
**At the weekend, I mostly.... (Multiple Choice)**

Responses		
	Percent	Count
Studied	10.42%	10
Played sport	5.21%	5
Netflixed	16.67%	16
Socialised	58.33%	56
Only wish I could remember	9.38%	9
<b>Totals</b>	<b>100%</b>	<b>96</b>



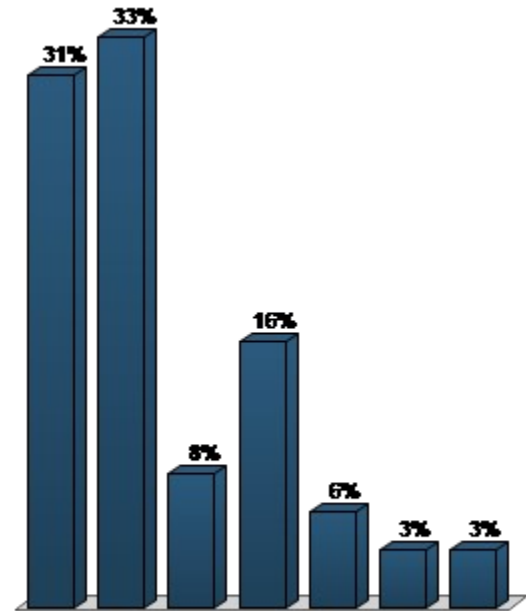
**2. I will enjoy the data analysis part of the 17C module? (Multiple Choice)**

Responses		
	Percent	Count
Definitely agree	6.96%	8
Probably agree	13.91%	16
Neutral	23.48%	27
Probably disagree	32.17%	37
Definitely disagree	23.48%	27
<b>Totals</b>	<b>100%</b>	<b>115</b>



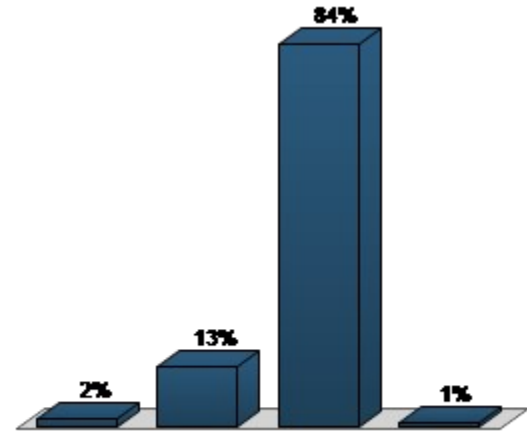
**3. No need to calculate, your gut feeling is ... (Multiple Choice)**

Responses		
	Percent	Count
0 – 15%	31.11%	28
1 – 30%	33.33%	30
31 – 45%	7.78%	7
46 – 60%	15.56%	14
61- 75%	5.56%	5
76% - 90%	3.33%	3
90 – 100%	3.33%	3
<b>Totals</b>	<b>100%</b>	<b>90</b>



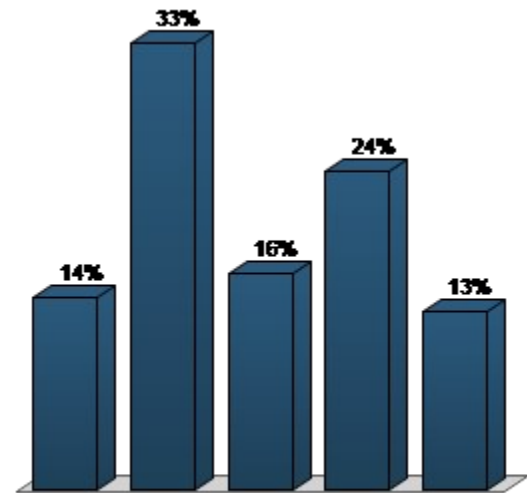
**4. What is a null hypothesis (Multiple Choice)**

Responses		
	Percent	Count
A boring idea	1.89%	2
A hypothesis that cancels out your data	13.21%	14
What you expect if nothing interesting is happening	83.96%	89
The least important hypothesis	0.94%	1
<b>Totals</b>	<b>100%</b>	<b>106</b>



**5. How do you feel about R so far?(R rather than data analysis in general) (Multiple Choice)**

Responses		
	Percent	Count
Excited	14.15%	15
Seems ok	33.02%	35
Undecided	16.04%	17
A bit worried	23.58%	25
Terrified	13.21%	14
<b>Totals</b>	<b>100%</b>	<b>106</b>



**6. Compared to how you felt about data analysis before this talk your feelings: (Multiple Choice)**

<b>Responses</b>		
	<b>Percent</b>	<b>Count</b>
Have moved in positive direction	35.64%	36
Feel about the same (positive or negative)	61.39%	62
Have moved in negative direction	2.97%	3
<b>Totals</b>	<b>100%</b>	<b>101</b>

